

C O D E N A M E  
**TALK OF  
HYDERABAD**

HABITAT FOR GLOBAL CITIZENS  
BACHUPALLY, HYDERABAD



# MASTER PLAN

## LEGEND

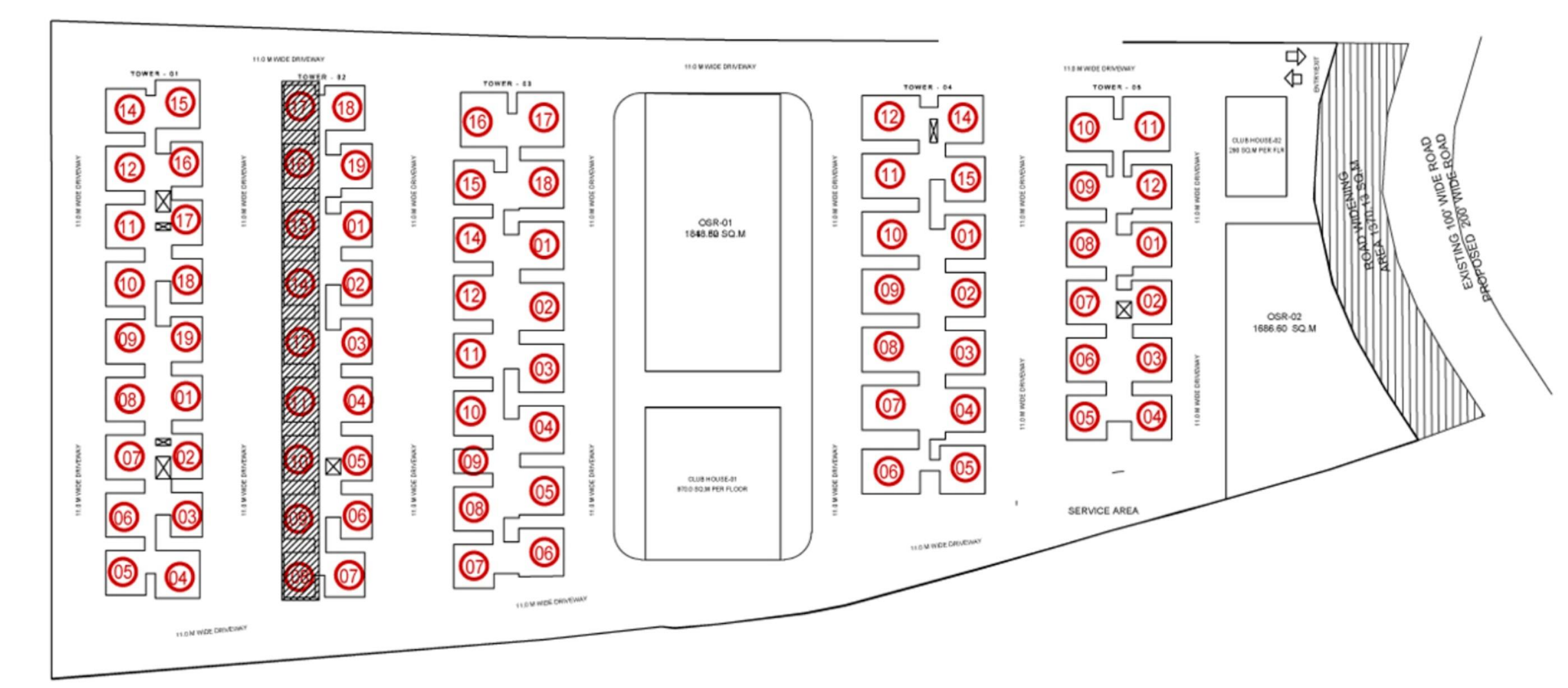
- |                                |                                   |                          |                                   |
|--------------------------------|-----------------------------------|--------------------------|-----------------------------------|
| 1. ENTRYSCAPE                  | 7. CHILDREN PLAY AREA             | 17. SWIMMING POOL        | 28. VIEWING DECK AND LOUNGE       |
| 2. CHILDREN WAITING AREA       | 8. KIDS POOL                      | 18. POOL DECK            | 29. YOGA DECK                     |
| 3. YOUNG CHILDREN HANGOUT AREA | 9. PLANTING BED                   | 19. BAR COUNTER          | 30. GAMES ZONE                    |
| 4. SENSORY PATHWAY             | 10. GREAT LAWN                    | 20. GAMES ROOM           | 31. SOLAR PANNEL                  |
| 5. OUTDOOR TABLE TENNIS        | 10a. LAWN                         | 21. TRAMPOLINE PARK      | 32. PARTY-BAR AND BARBEQUE        |
| 6. HALF – BASKETBALL COURT     | 11. HAMMOCK PARK                  | 22. OPEN DINNING         | 33. DINNING WITH NATURE           |
|                                | 12. PAVILIONS                     | 23. BAR COUNTER          | 34. INTERACTIVE LOUNGE            |
|                                | 13. CO-WORKING SPACES AT THE PARK | 24. DINNING WITH NATURE  | 35. MINI THEATRE                  |
|                                | 14. SPILL OVER WATER BODY         | 25. SENIOR CITIZEN PLAZA | 36. CO- WORKING SPACE –IN THE SKY |
|                                | 15. LADIES KITTY CORNER           | 26. URBANRISE GENIUS     | 37. TERRACES WITH CARPET GRASS    |
|                                | 16. SUNKEN LOUNGE                 | 27. SEATING PLAZA        |                                   |





# UNIT PLAN

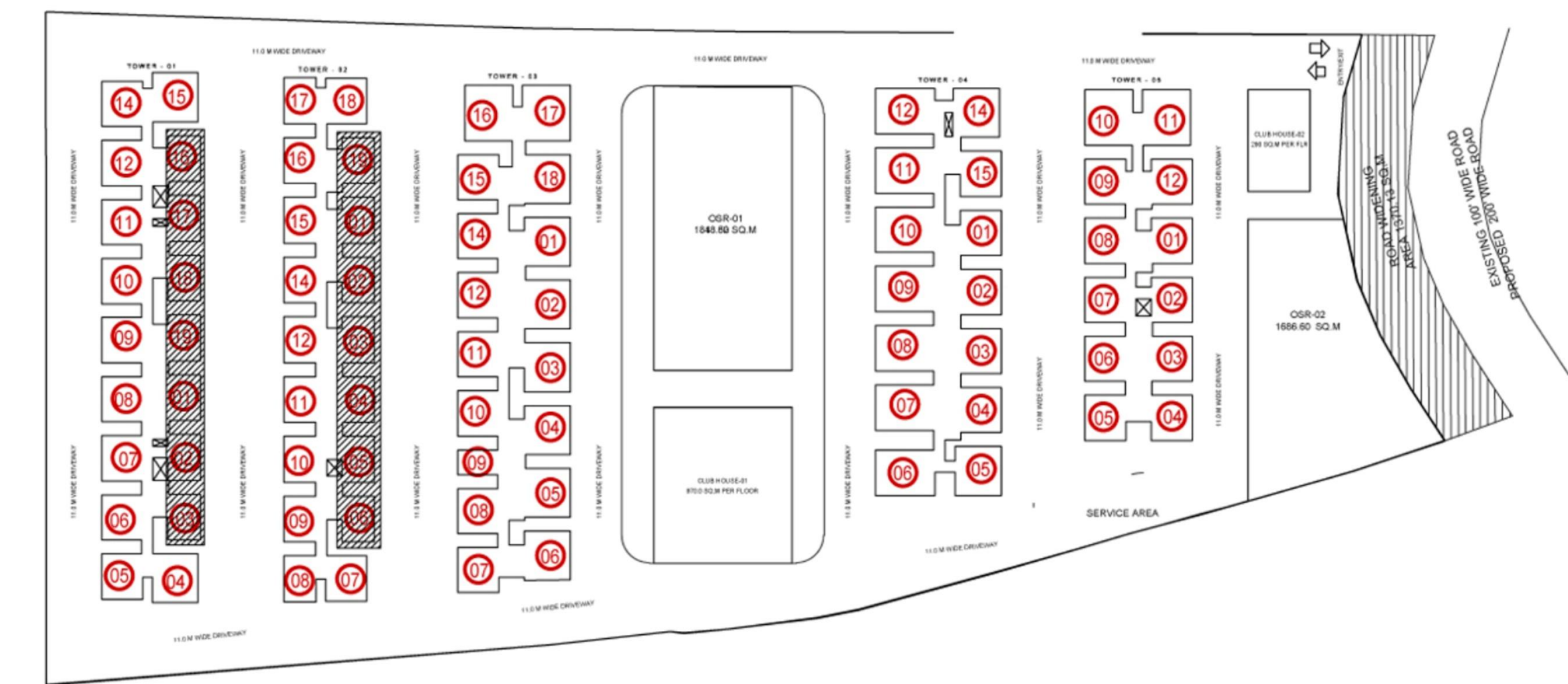
**2.5 BHK**   **1099 Sq. Ft.**   **EAST FACING**





# UNIT PLAN

**2.5 BHK**   **1099 Sq. Ft.**   **WEST FACING**





# UNIT PLAN

3B+2T

1353 Sq. Ft.

EAST FACING



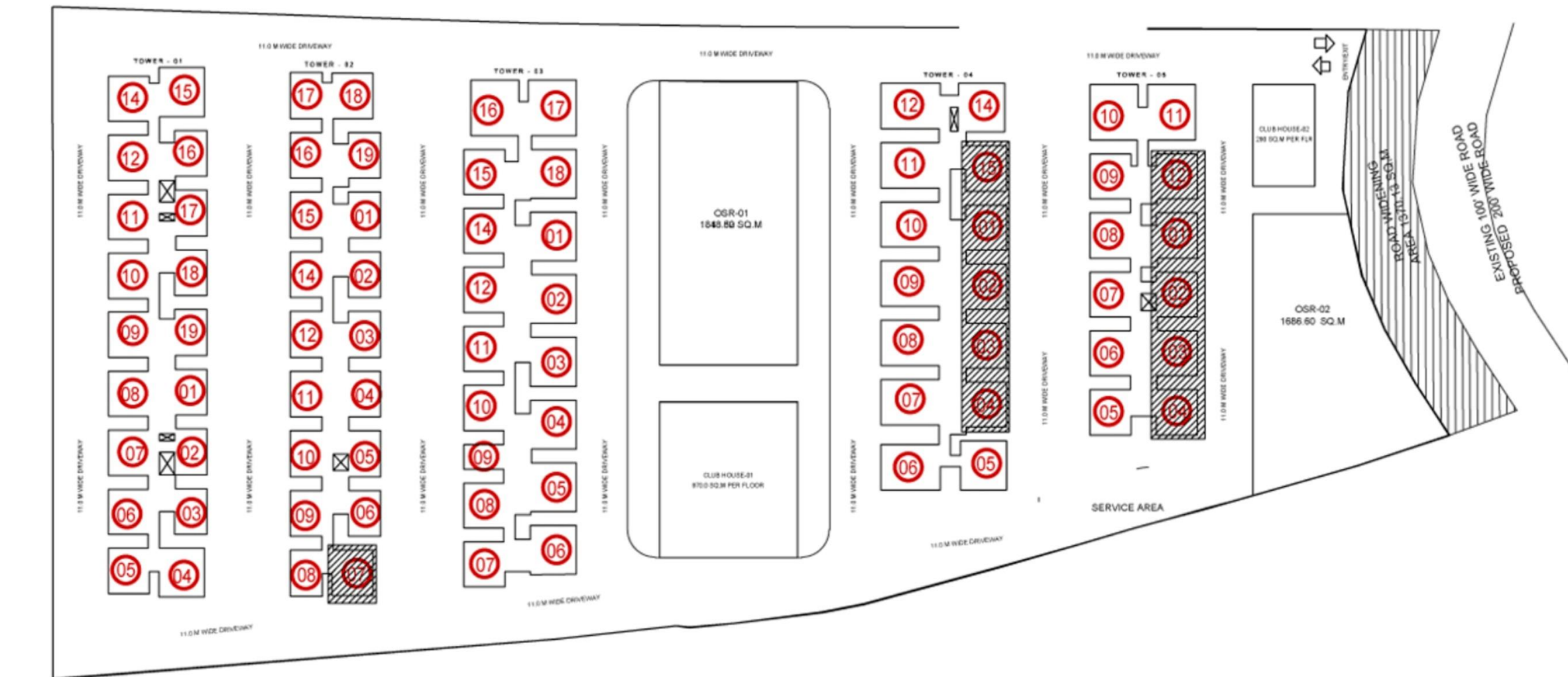


# UNIT PLAN

3B+2T

1353 Sq. Ft.

WEST FACING



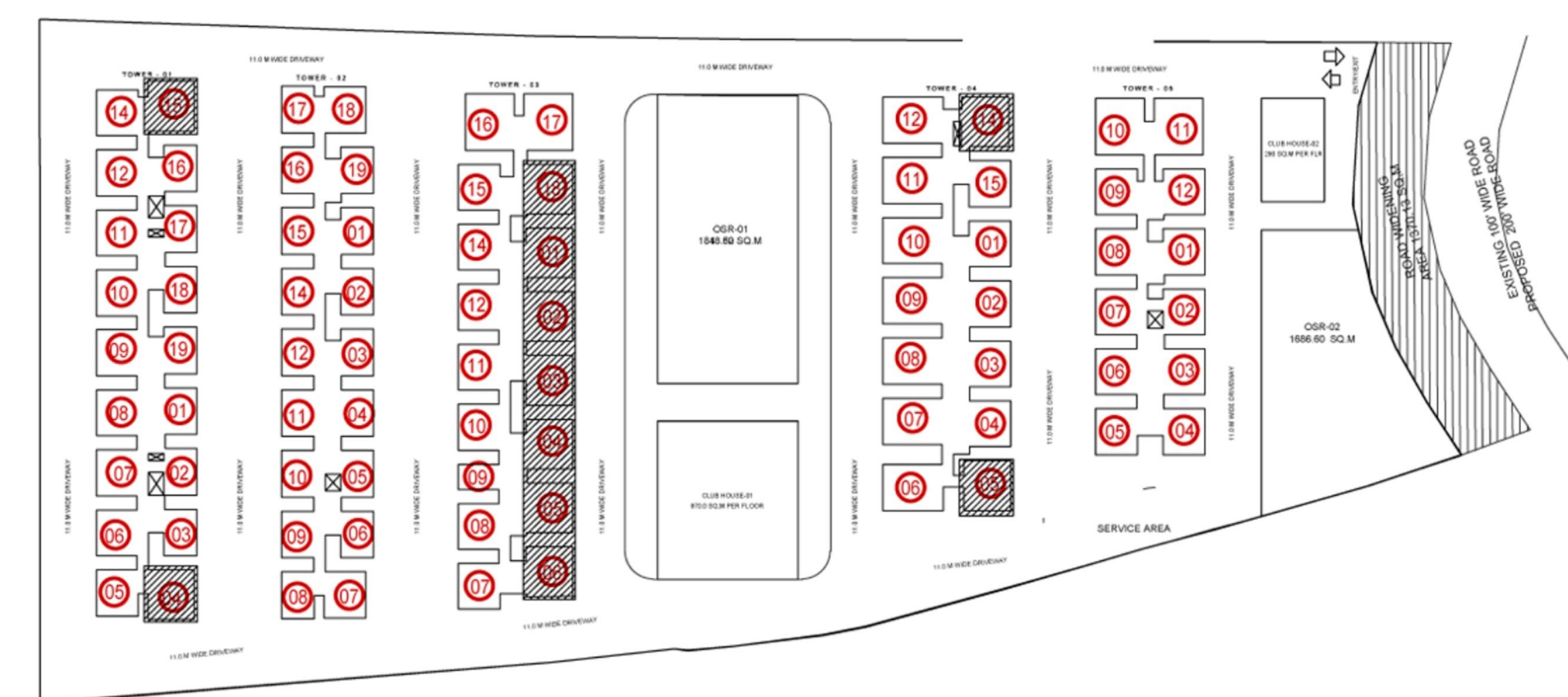


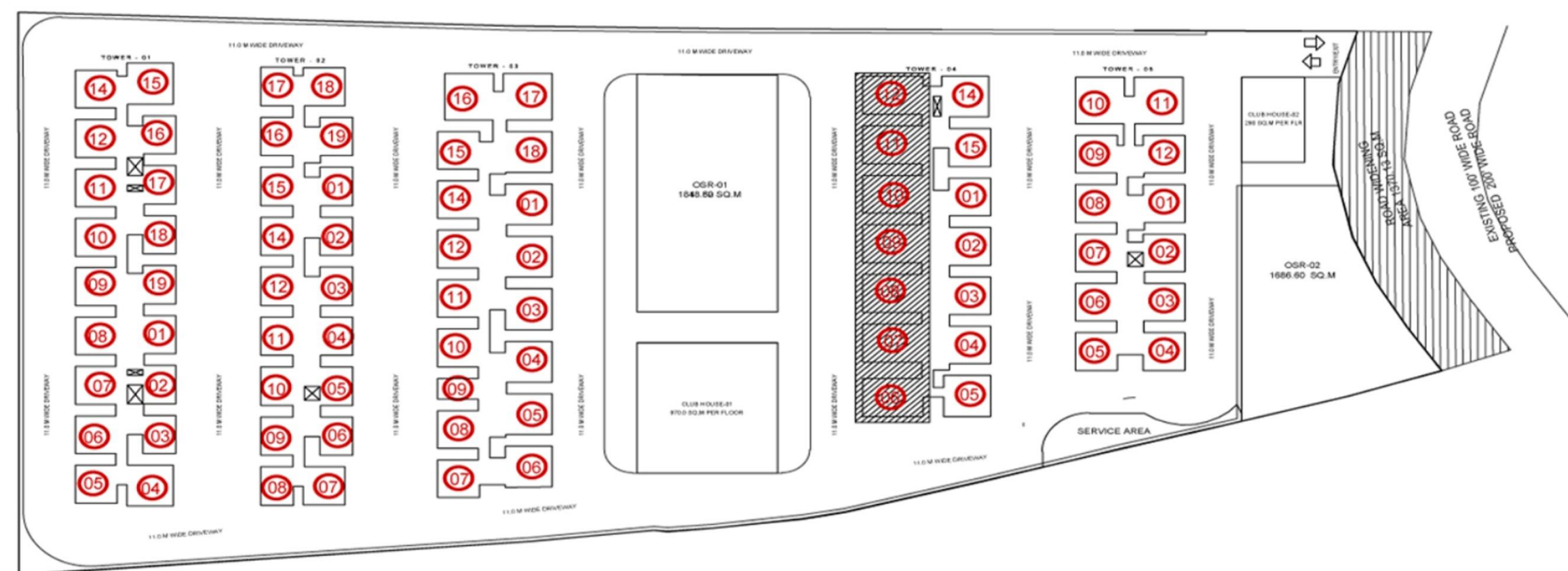
# UNIT PLAN

3B+3T

1617 Sq. Ft.

WEST FACING





# UNIT PLAN

**4B+3T**    **1914 Sq. Ft.**    **EAST FACING**



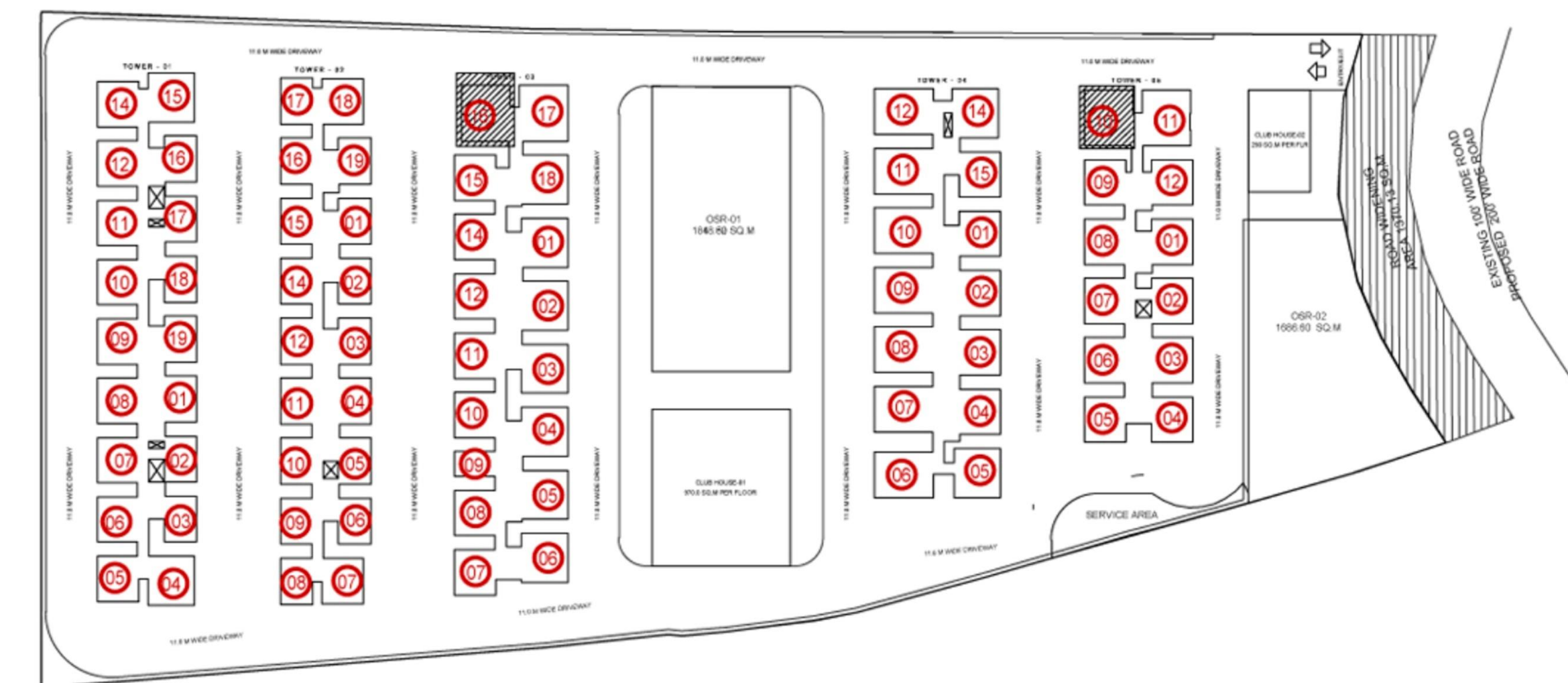


# UNIT PLAN

4B+3T

2021 Sq. Ft.

EAST FACING





# UNIT PLAN

**4B+3T**    **2021 Sq. Ft.**    **WEST FACING**



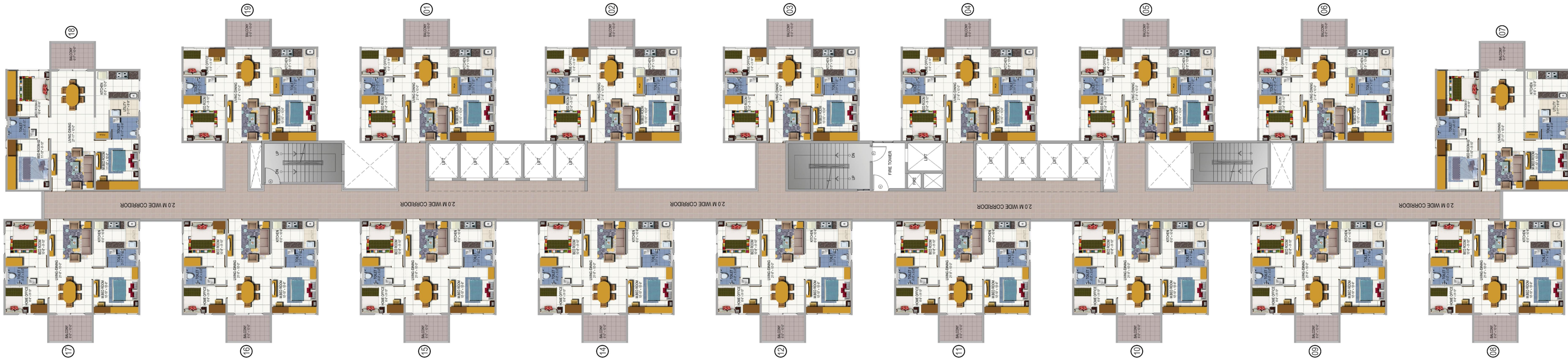
TYPICAL TOWER PLAN

TOWER-3



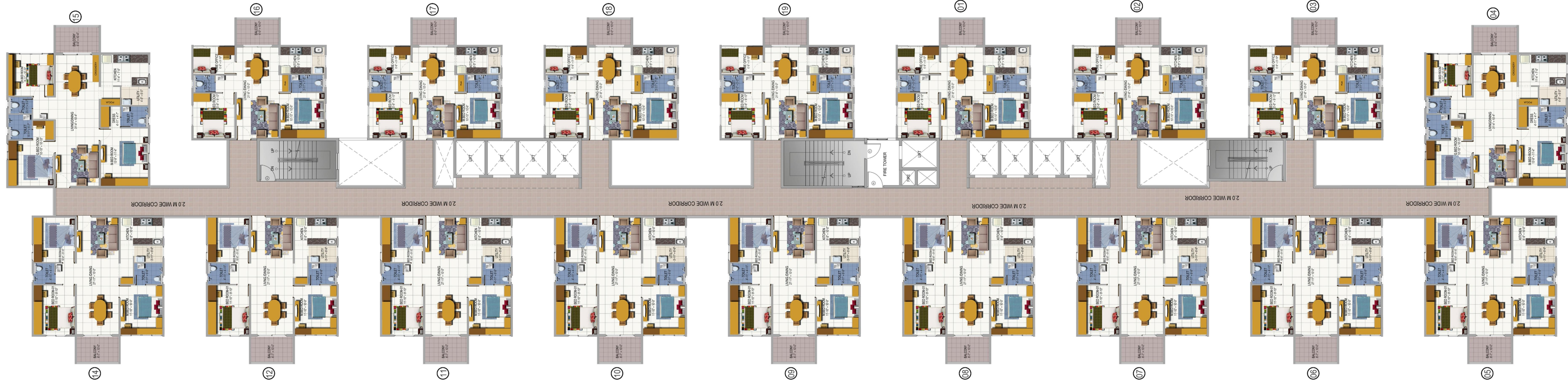
TYPICAL TOWER PLAN

TOWER-4



TYPICAL TOWER PLAN

TOWER-5



C O D E N A M E  
**TALK OF  
HYDERABAD**

HABITAT FOR GLOBAL CITIZENS  
BACHUPALLY, HYDERABAD



CALL US ON TOLL FREE NUMBER  
 **1800-572-6400**

 **62817 25252**

 [www.bigrealty.co.in](http://www.bigrealty.co.in)

 [sreekanthr@bigrealty.co.in](mailto:sreekanthr@bigrealty.co.in)

**LEGAL DISCLAIMER:** All depictions of interiors, furniture, fixtures, are conceptual only and are not included in your house. The photos contained in the marketing collaterals such as marketing brochure, sales kits, walkthroughs etc. may be stock photographs or have been shot off-site and are used to depict the lifestyle to be achieved. All drawings in the marketing collaterals are illustrations and not actual images. The plans are subject to changes based on final approvals from state government, HMDA, RERA & local bodies. Prospective buyers are advised to visit Urbanrise sales office and verify floor plans and other parameters before making a buying decision.

This marketing collateral is purely conceptual and does not constitute a legal document. Visual representation are not to be taken as representation of facts and do not form part of an offer or contract. The management of Urbanrise group reserves the right to add, delete or alter any specification mentioned here.